



Sonoma Water

Clean. Reliable. Essential. Every day.

Sonoma's OneRain Flood Warning & Monitoring System

CARLOS DIAZ, P.E.
SONOMA WATER

Technical Advisory Committee
Meeting

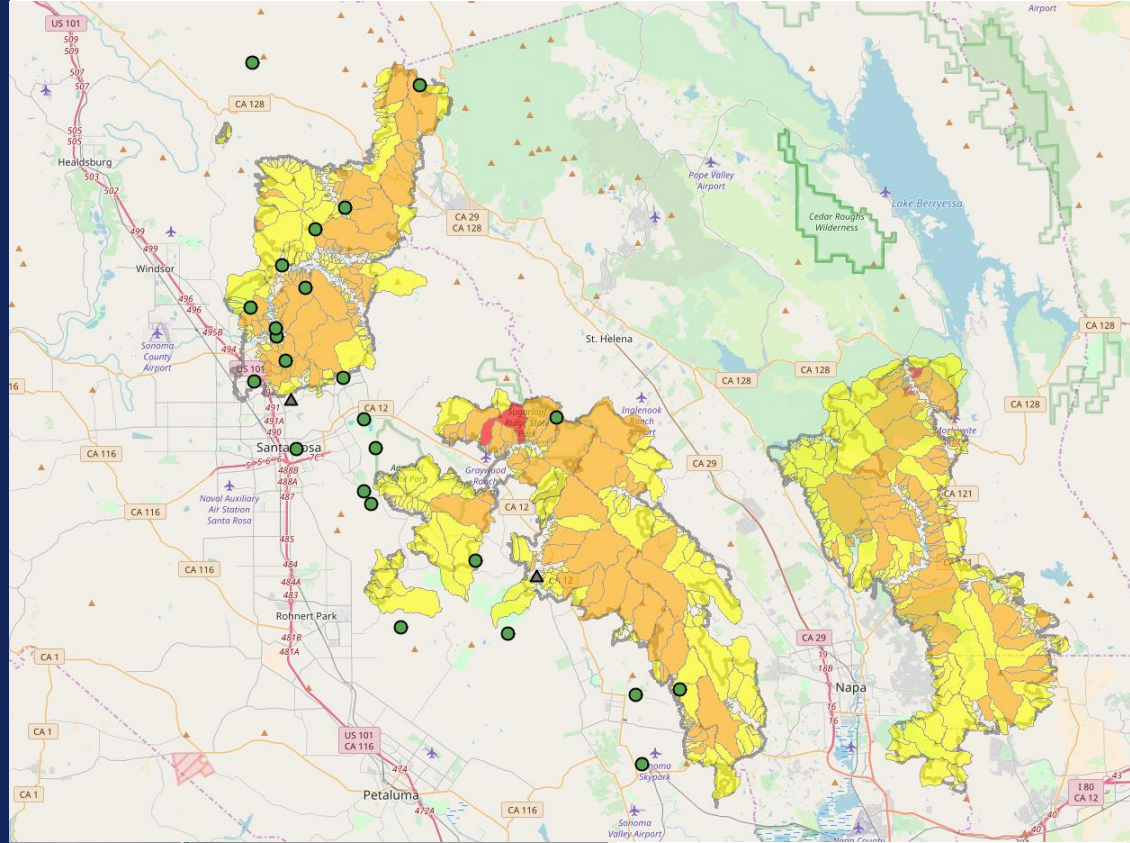
Monday, December 3, 2018

    sonomawater.org



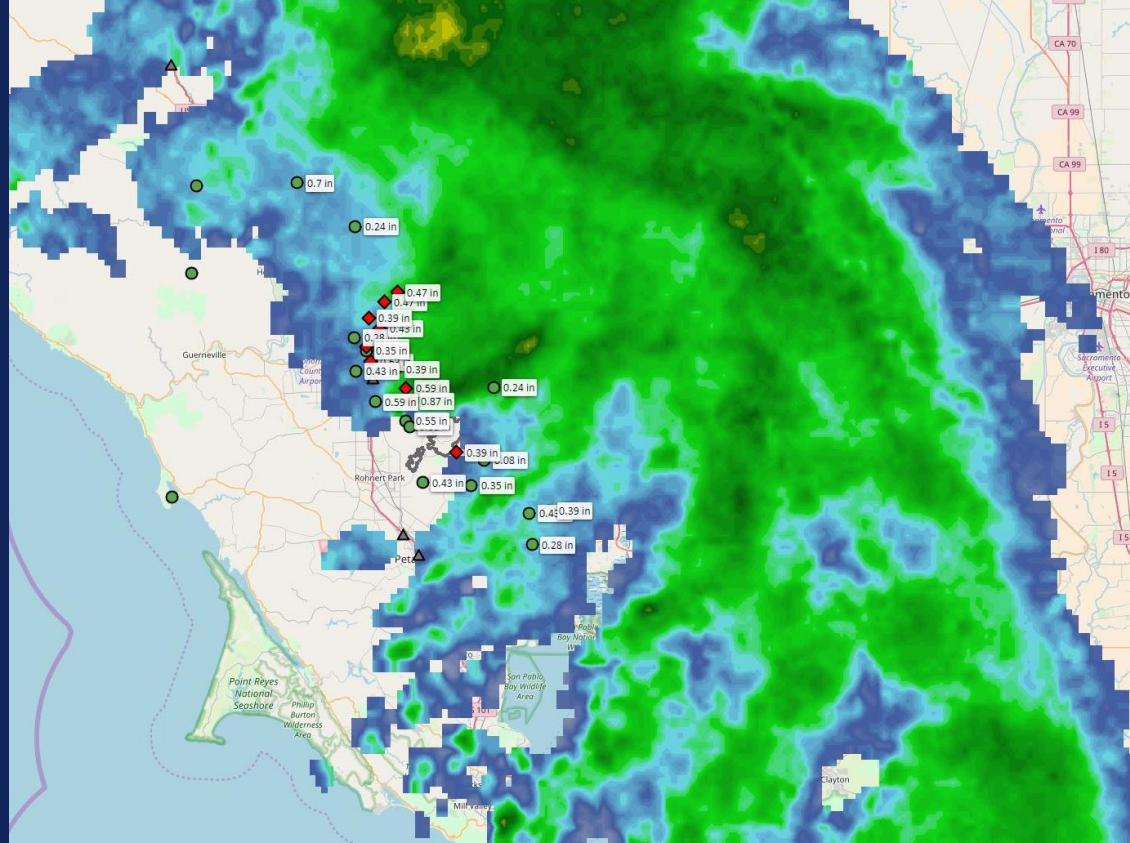
What is Sonoma OneRain?

- Real-time rainfall, river/stream, and reservoir data
 - 25 gage locations
- Also leverages readily available data online
- Utilize Napa County's Mt. St. Helena repeater
- Base receive station at Water Agency office
- Expanded to include 4 soil moisture / soil temperature sites

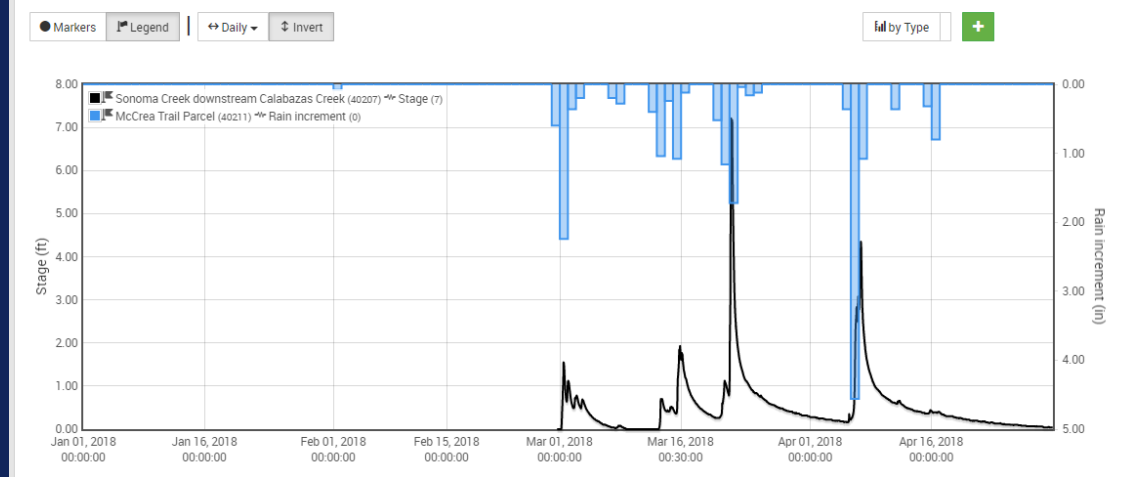


Features

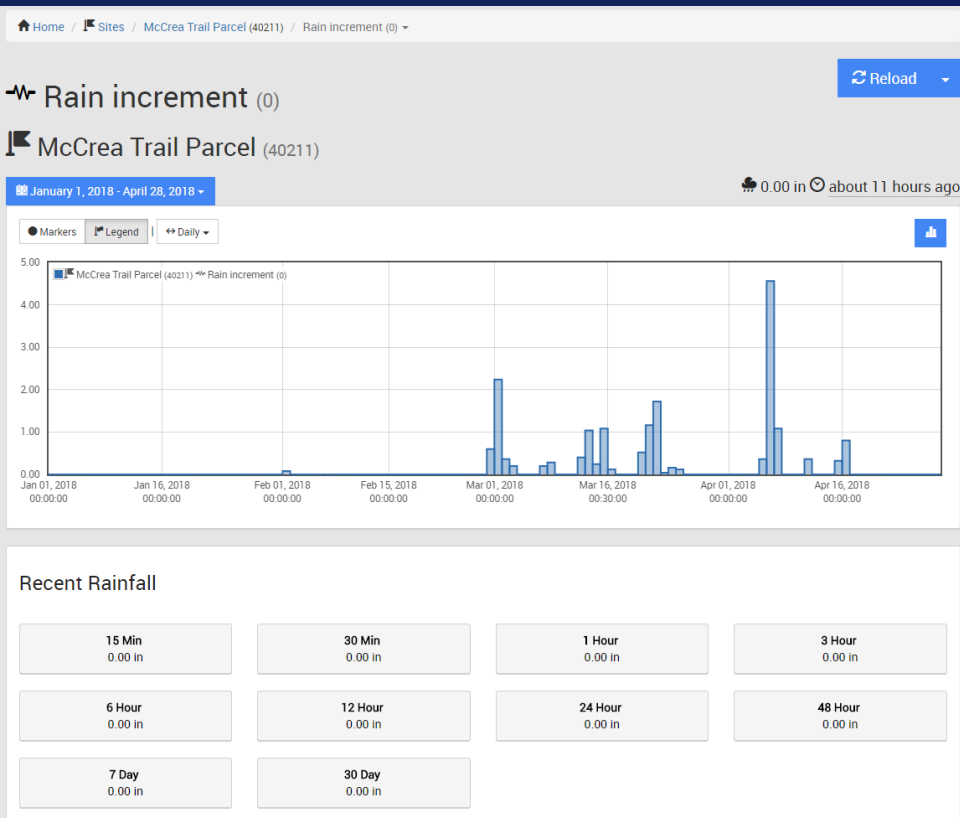
- Utility in both dry and wet weather conditions
- Ability to visualize data in real-time
 - Both from computer and mobile devices
- Map layers
 - NWS watches/warnings
 - Forecasted rainfall
- Summary dashboards
- Ability to create bookmarks
- Alarms and notifications



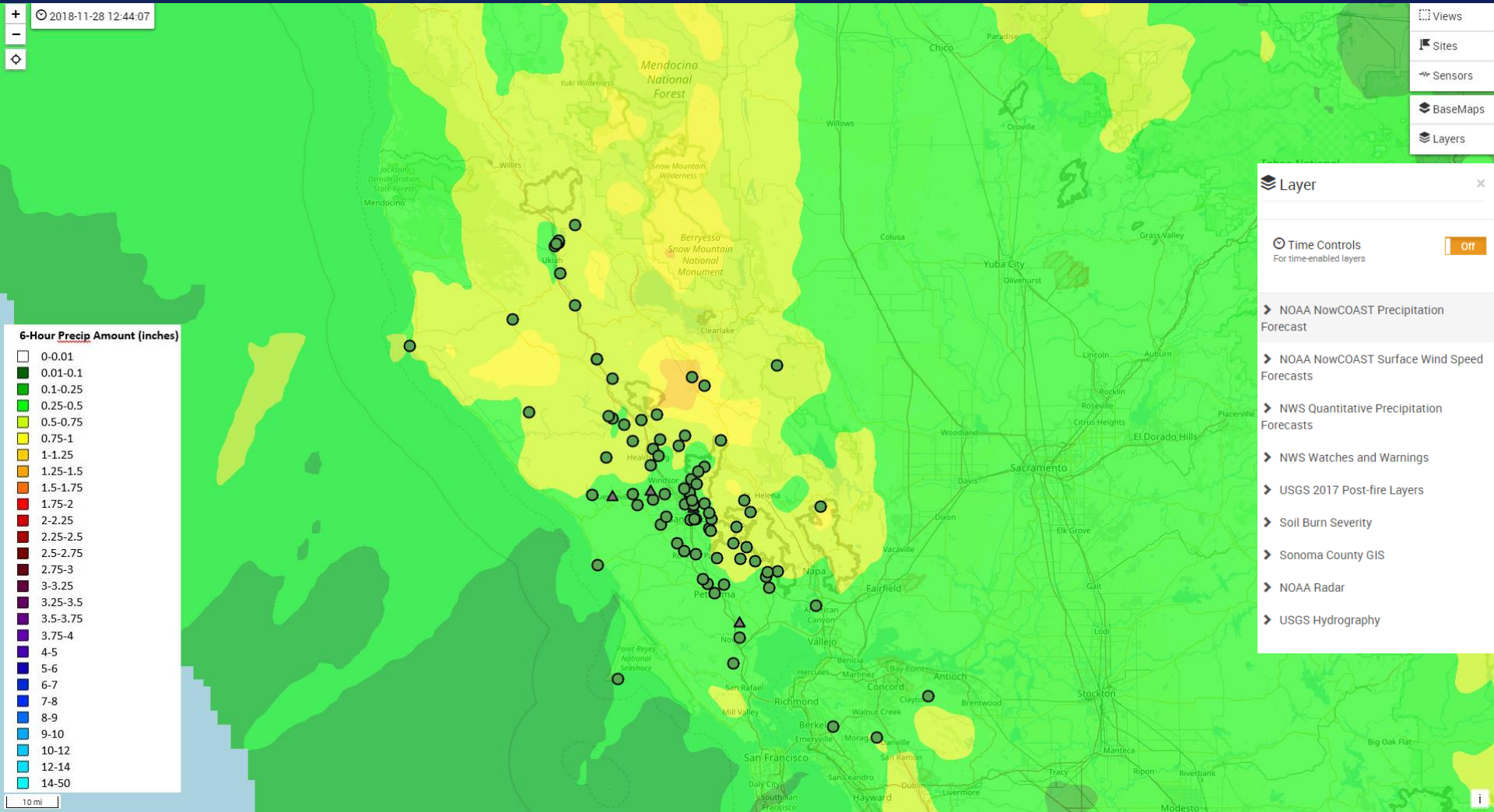
January 1, 2018 - April 30, 2018



Visualizing Data



Map Layers – Rainfall Forecast



Bookmarks – Russian River Flows

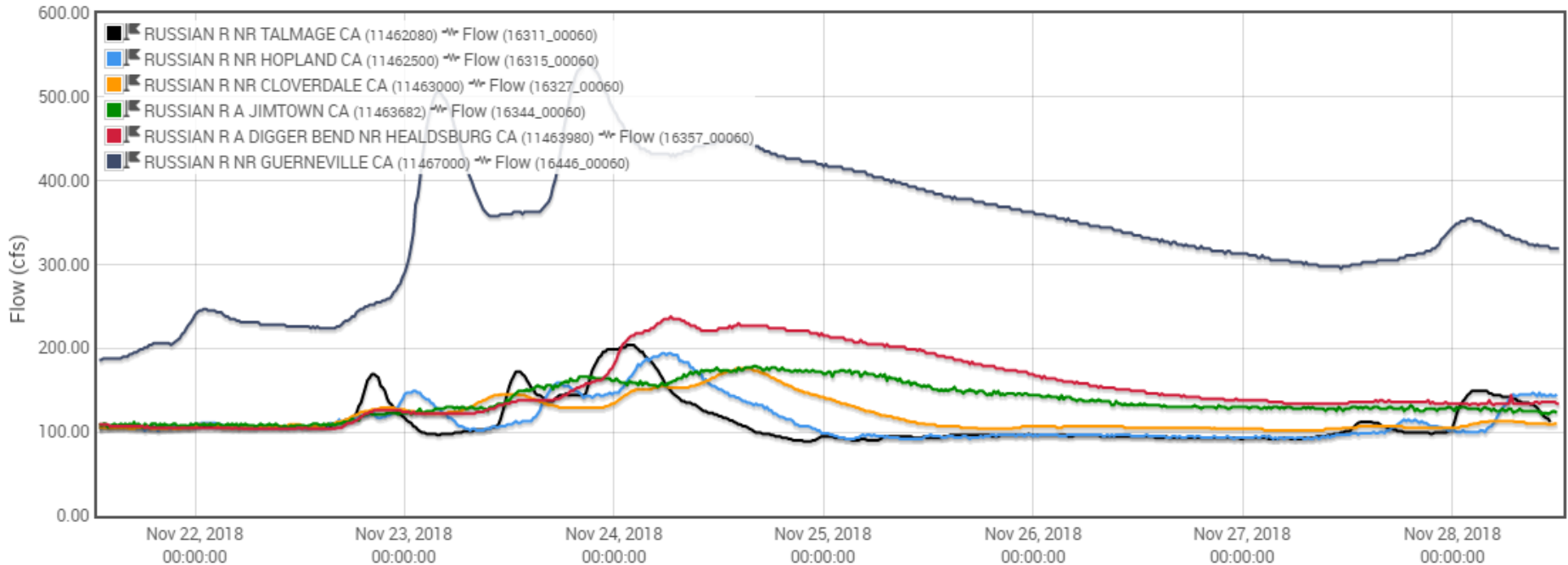
21 November, 2018 - 28 November, 2018

Markers Legend

Sensor Type

Latency

+ Add



Dashboards – Russian River Flows

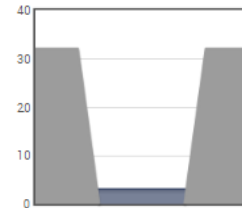
- Real-time stage and flow at Hacienda Bridge
- Prior 12-hour rainfall
- Upstream flows

- Dashboards also available for Tubbs and Nuns burn scars

Guerneville Summary

Current Stage

RUSSIAN R NR GUERNEVILLE C...
Stage (16448_00065)



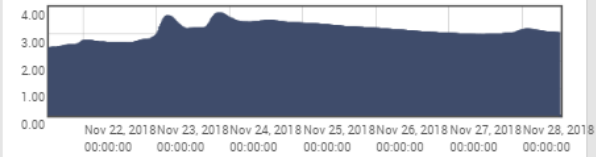
3.04 ft

33 minutes ago

Flood Stage: 32.0 ft shown for graphical purpose

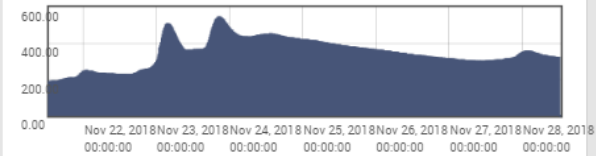
7-Day Stage

RUSSIAN R NR GUERNEVILLE CA (11467000) Stage (16448_00065)

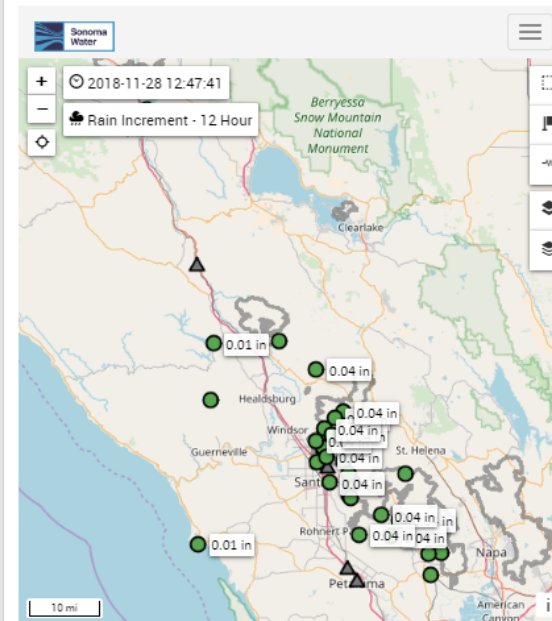


7-Day Flow

RUSSIAN R NR GUERNEVILLE CA (11467000) Flow (16446_00060)



12-Hr Rainfall



Current Upstream Flows

RUSSIAN R NR TALMAGE CA ...
Flow (16311_00060)

107.00 cfs
33 minutes ago

RUSSIAN R NR HOPLAND CA ...
Flow (16315_00060)

145.00 cfs
an hour ago

RUSSIAN R NR CLOVERDALE C...
Flow (16327_00060)

110.00 cfs
an hour ago

RUSSIAN R A GEYSERVILLE CA ...
Flow (16339_00060)

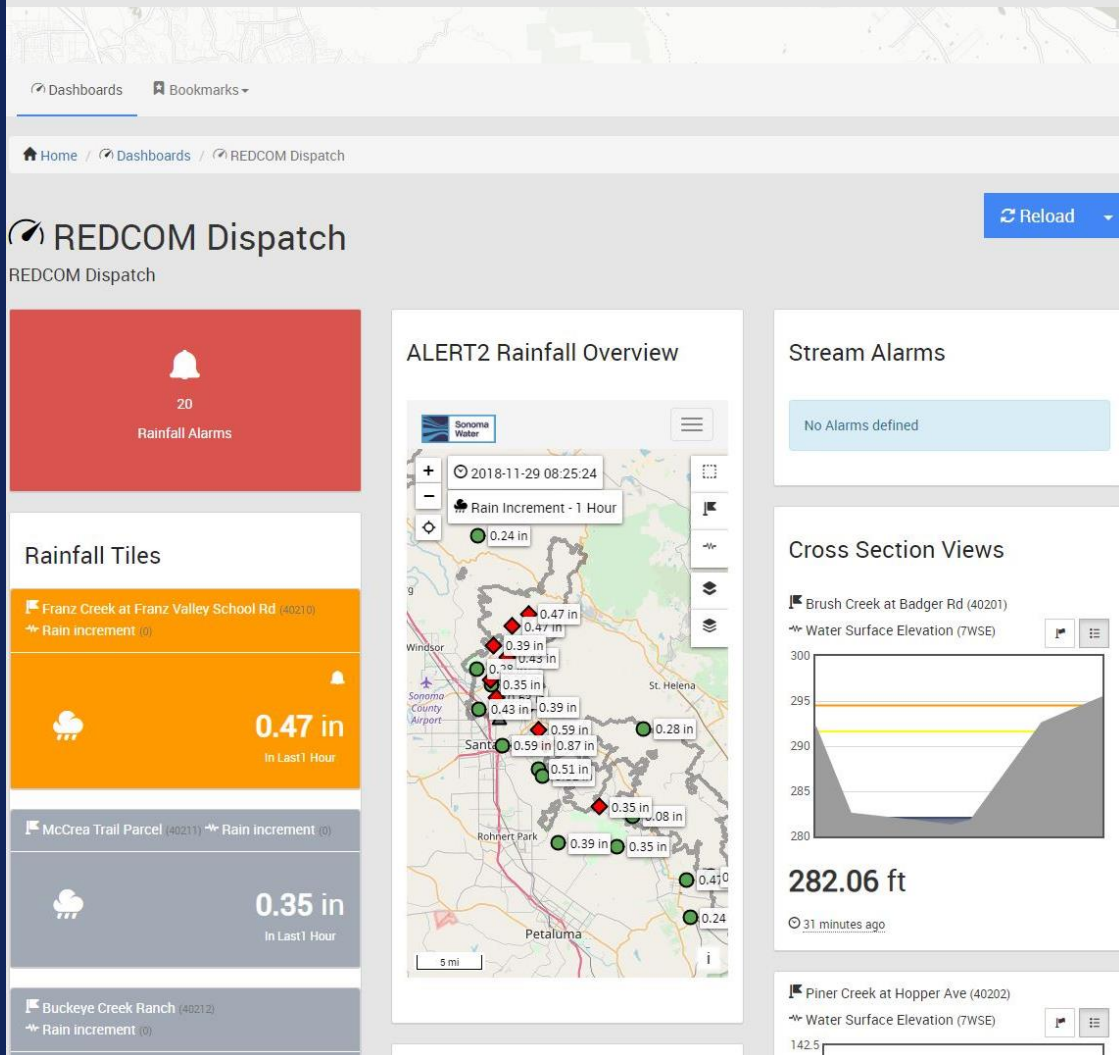
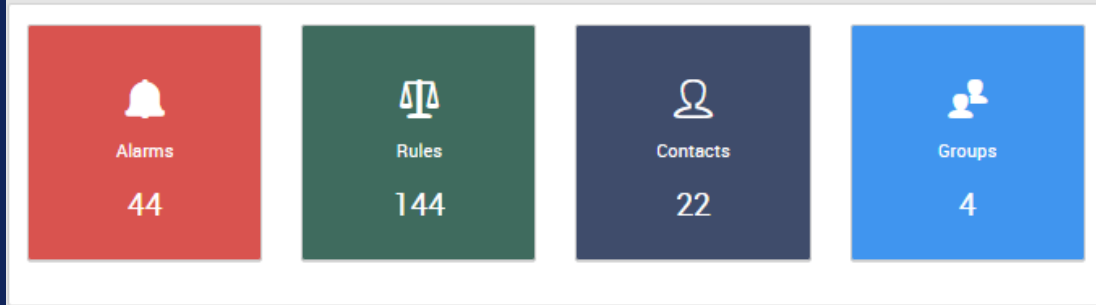
152.00 cfs
33 minutes ago

RUSSIAN R NR HEALDSBURG C...
Flow (16365_00060)

130.00 cfs
an hour ago

Alarms & Notifications

- Rules can be created for rainfall rates or stream levels
- When thresholds are met, alarm notifications can be sent out by phone/email
- Contact groups can be set to receive certain alarms





Sonoma
Water



**Sonoma
Water**

Carlos Diaz, P.E.
carlos.diaz@scwa.ca.gov

<https://sonoma.onerain.com/>

    sonomawater.org