

# Regional Water Supply Resiliency Study



## Water & Technical Advisory Committee Meeting May 6, 2019

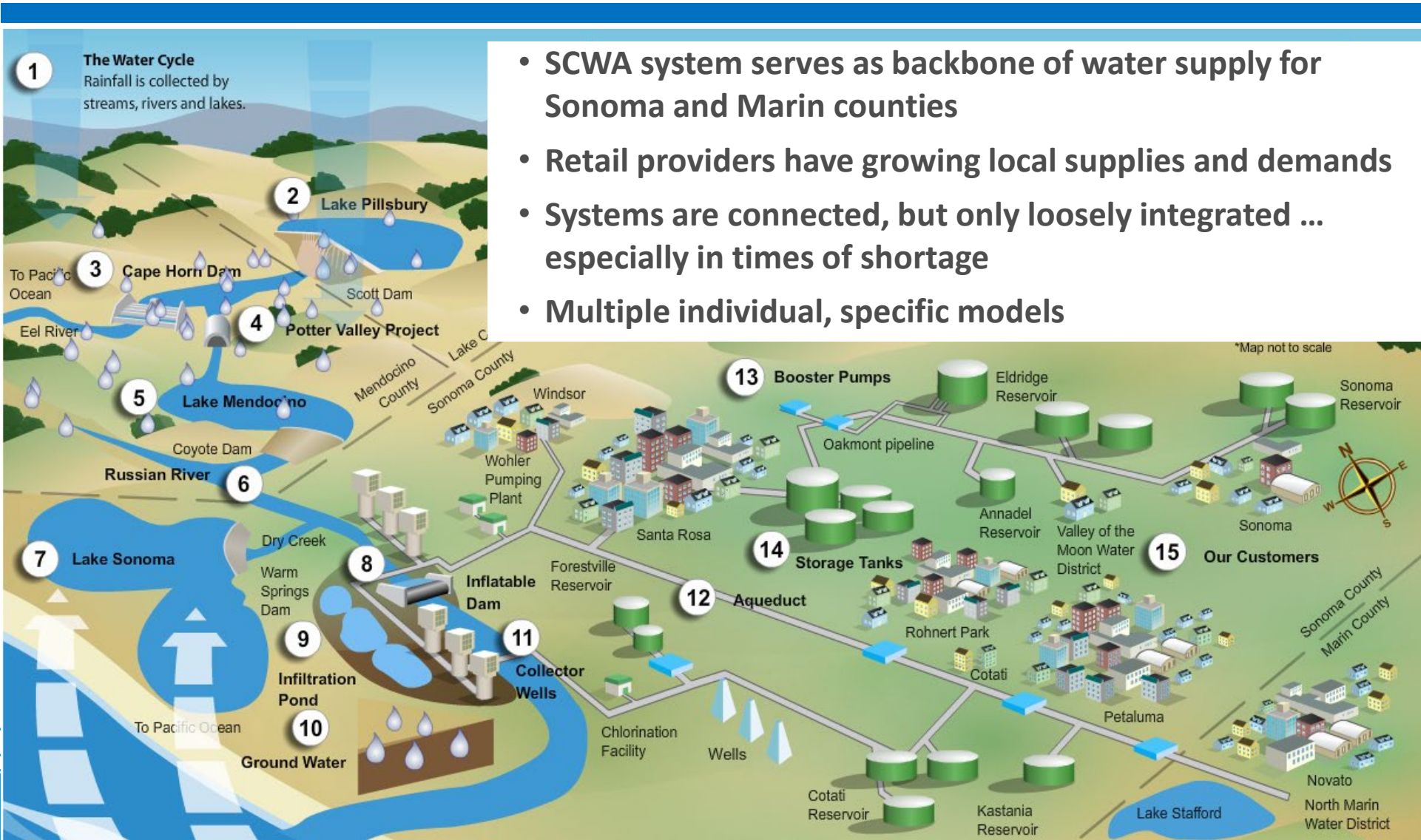
Jay Jasperse, P.E.  
Chief Engineer/Director Groundwater Management  
Sonoma Water



**Sonoma  
Water**

# Project Understanding

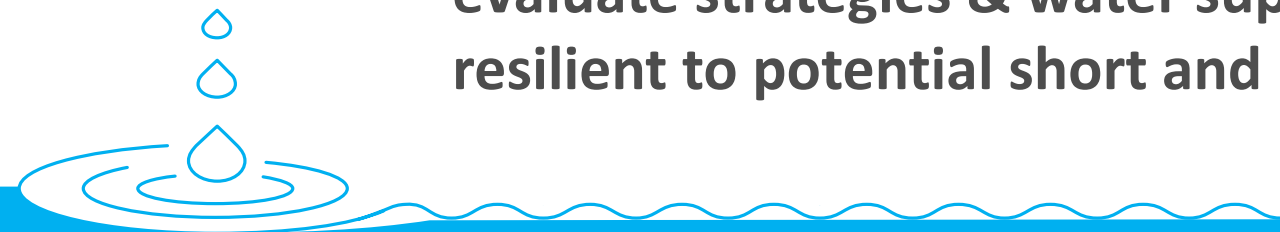
## Complex Interconnected System



- SCWA system serves as backbone of water supply for Sonoma and Marin counties
- Retail providers have growing local supplies and demands
- Systems are connected, but only loosely integrated ... especially in times of shortage
- Multiple individual, specific models

# Resiliency Study Overview

- **Sonoma Water provides wholesale water supply to cities and water districts – Serving over 600,000 people**
- **Water Contractors & MMWD also have local water supplies**
  - Surface Water
  - Groundwater
  - Recycled water
- **Systems & infrastructure are connected, but not managed in a coordinated or strategic manner**
- **Project will develop a regional water supply decision support tool to evaluate strategies & water supply projects to make the region more resilient to potential short and long-term water shortages**



# Resiliency Study Project Overview

**PHASE 1:**  
Work Plan and  
Scoping Document

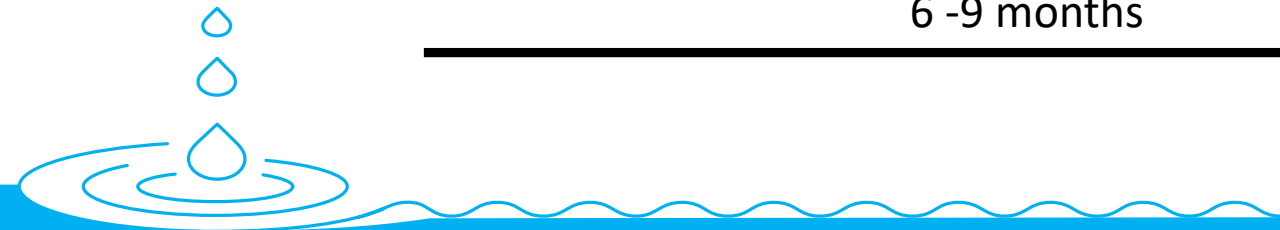
**PHASE 2:**  
Development and Implementation  
of Decision Support Tool

**PHASE 3:**  
Modification and Maintenance  
of Decision Support Tool

6 -9 months

18 months

24 months



# Project Status

## Just Getting Started ...

- **Jacobs Engineering selected via a competitive selection process**
- **TAC representatives participated in selection of consultant**
- **Consultant contract approved by Sonoma Water's Board in February 2019 (\$163,728)**
- **Contract scope of work to complete Phase 1 of project**
- **Funding in FY19/20 budget for Phase 2**
- **Project kickoff meeting – April 2019. Coordination with TAC begin May/June 2019**

# Overview of Phase 1 Tasks

- **Task 1 – Establish and Document Vision, Goals, and Objectives**
- **Task 2 – Review and Refine Resiliency Planning Framework**
- **Task 3 – Conduct Initial Scoping Meetings**
- **Task 4 – Evaluate and Selected Decision Support Modeling Platform**
- **Task 5 – Identify Critical Uncertainties and Develop Storylines and Scenarios**
- **Task 6 – Identify Range of Water Supply Options**
- **Task 7 – Stakeholder Outreach and Coordination**
- **Task 8 – Prepare Study Work Plan**
- **Task 9 – Project Management and Meetings**



# Role of WAC & TAC

## WAC/TAC:

- Provide input on Study vision, goals, & objectives
- Provide input on areas of focus & opportunities
- Utilize results of study in water management decision-making

## TAC:

- Provide relevant system information (e.g., facilities, existing models & data)
- Provide technical input
- Assist in developing water shortage scenarios for analysis
- Provide a lead representative contact for the project



# Anticipated Outcomes ...

- Better understanding regarding regional vulnerabilities due to water shortages
- Insights for new operational strategies & projects to improve resiliency
- Improved position for grant funding opportunities
- Development of a decision support tool that can continue to be used for regional water supply resiliency planning on an ongoing basis
- Increased coordination between Sonoma Water & Water Contractors

