

Conservation Tracking for the Sonoma-Marín Saving Water Partnership

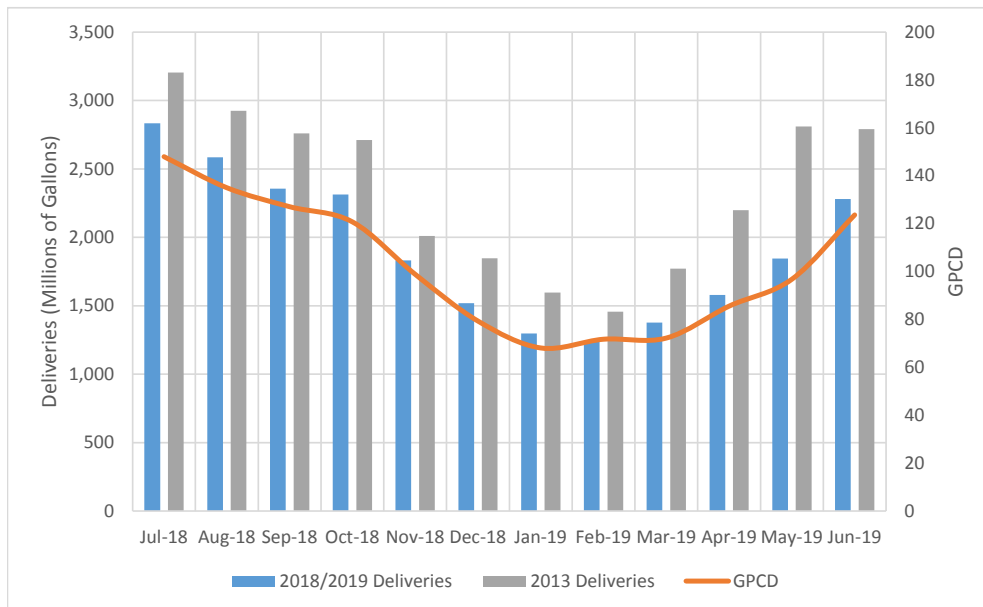
Table 1: June 2019 Water Usage

Water Retailer	Total Deliveries (Gallons)	2013 Benchmark (Gallons)	Relative to 2013 Benchmark
Cal Am	23,787,123	31,919,000	-25%
Cotati	23,829,125	31,868,228	-25%
Marin Municipal	855,554,386	924,117,905	-7%
North Marin	232,690,199	357,000,000	-35%
Petaluma	268,827,075	314,982,234	-15%
Rohnert Park	130,029,212	158,000,000	-18%
Santa Rosa	495,818,140	655,669,334	-24%
Sonoma	59,900,538	75,705,062	-21%
Valley of the Moon	69,906,249	102,353,192	-32%
Windsor	120,630,040	138,875,923	-13%
SMSWP Total	2,280,972,087	2,790,490,878	-18%

Table 2: Year to Date Water Usage

Water Retailer	Total Deliveries (Gallons)	2013 Benchmark (Gallons)	Relative to 2013 Benchmark
Cal Am	100,574,366	139,802,000	-28%
Cotati	105,265,546	149,598,194	-30%
Marin Municipal	3,465,096,275	4,160,490,571	-17%
North Marin	939,291,641	1,453,000,000	-35%
Petaluma	1,096,488,615	1,456,035,990	-25%
Rohnert Park	610,697,920	760,000,000	-20%
Santa Rosa	2,279,982,445	3,126,643,347	-27%
Sonoma	239,550,992	350,886,592	-32%
Valley of the Moon	311,045,699	452,887,864	-31%
Windsor	466,750,602	575,466,980	-19%
SMSWP Total	9,614,744,102	12,624,811,538	-24%

Chart 1: SMSWP Deliveries & GPCD



2013 Benchmark: 2013 was selected as the benchmark per Executive Order B-40-17, which continues the reporting requirements established in Executive Order B-29-15.