

Conservation Tracking for the Sonoma-Marín Saving Water Partnership

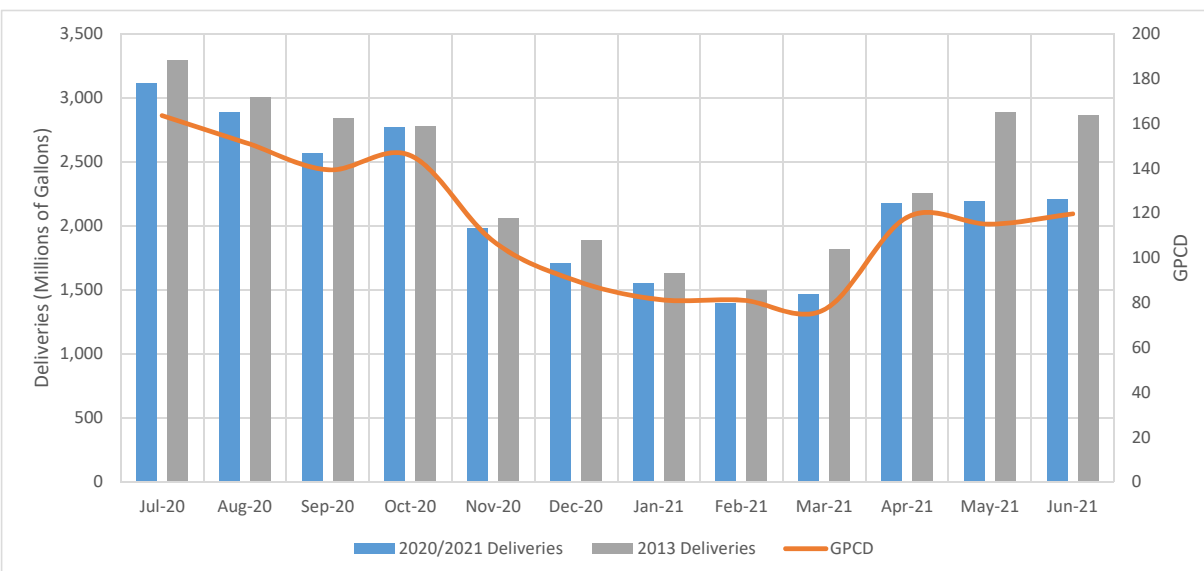
Table 1: June 2021 Water Usage

Water Retailer	Total Deliveries (Gallons)	2013 Benchmark (Gallons)	Relative to 2013 Benchmark
Cal Am	26,299,080	31,919,000	-18%
Cotati	22,614,059	31,868,228	-29%
Healdsburg	48,359,000	72,659,544	-33%
Marin Municipal	706,181,029	924,117,905	-24%
North Marin	215,247,362	357,000,000	-40%
Petaluma	260,354,949	314,982,234	-17%
Rohnert Park	144,346,616	158,000,000	-9%
Santa Rosa	520,511,797	655,669,334	-21%
Sonoma	66,494,589	75,705,062	-12%
Valley of the Moon	77,709,207	102,353,192	-24%
Windsor	113,754,584	138,875,923	-18%
SMSWP Total	2,201,872,273	2,863,150,422	-23%

Table 2: 2021 Year to Date Water Usage

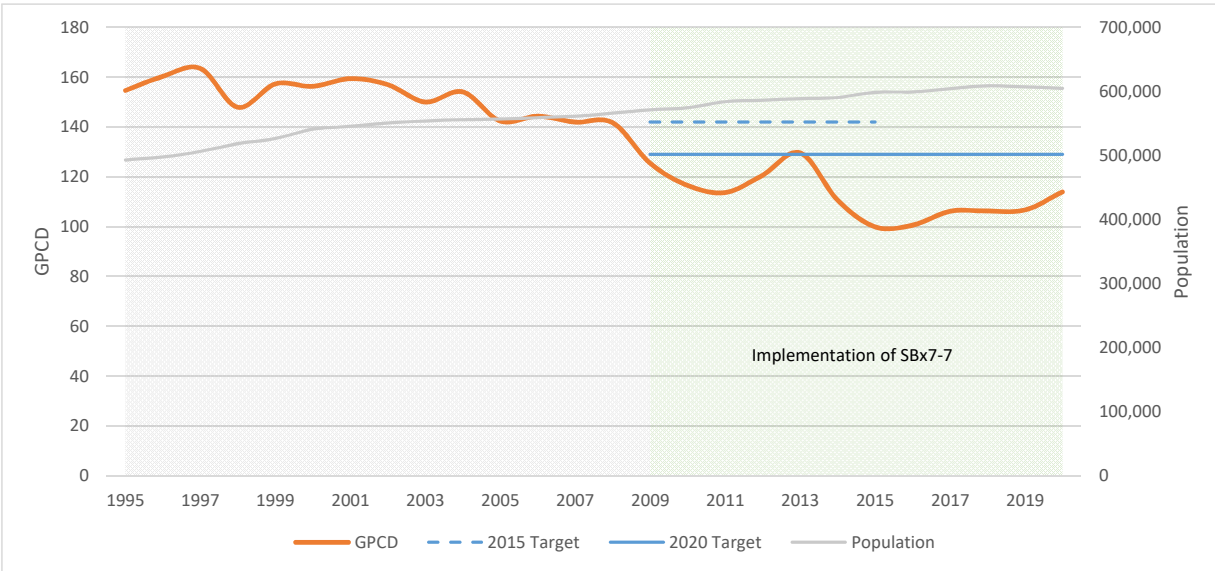
Water Retailer	Total Deliveries (Gallons)	2013 Benchmark (Gallons)	Relative to 2013 Benchmark
Cal Am	129,703,080	139,802,000	-7%
Cotati	122,365,588	149,598,194	-18%
Healdsburg	253,270,000	305,280,948	-17%
Marin Municipal	3,552,157,146	4,160,490,571	-15%
North Marin	1,111,309,883	1,453,000,000	-24%
Petaluma	1,228,784,121	1,456,035,990	-16%
Rohnert Park	699,131,503	760,000,000	-8%
Santa Rosa	2,718,538,807	3,126,643,347	-13%
Sonoma	285,281,345	350,886,592	-19%
Valley of the Moon	373,594,428	452,887,864	-18%
Windsor	495,684,541	575,466,980	-14%
SMSWP Total	10,969,820,440	12,930,092,486	-15%

Chart 1: SMSWP Deliveries & GPCD



2013 Benchmark: 2013 was selected as the benchmark per Executive Order B-40-17, which continues the reporting requirements established in Executive Order B-29-15.

Chart 2: SMSWP GPCD Time Series



Note: Chart 2 excludes GPCD and population data for Cal Am and Healdsburg who joined the SMSWP after the establishment of the regional 20x2020 targets displayed on the chart.