



Sonoma Water

Clean. Reliable. Essential. Every Day.

NEXGEN CMMS



Current CMMS?

Our current system is Maximo and it does not serve us well.

We are moving to NEXGEN as it better meets our needs from a field staff/ ease of use and reporting perspective.

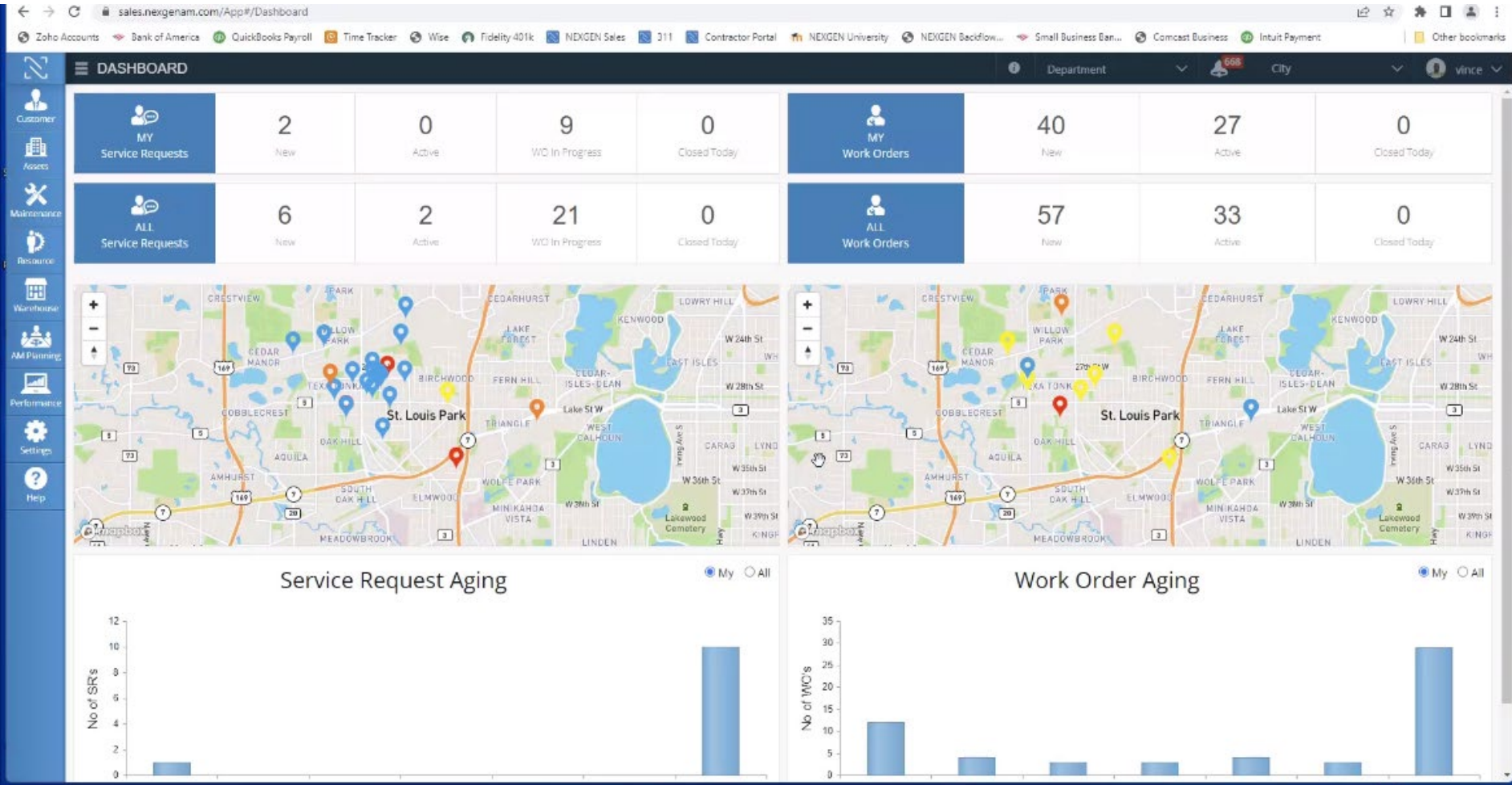
Will allow us to use a GIS based system.

NEXGEN Features

- **Integrates with GIS, 811 Dig Alert, and SCADA.**
- **Work order tracking.**
- Reusable task templates.
- **Share statistics and KPIs (Key Performance Indicators).**
- **Dashboards for increased transparency across organizational levels.**
- Generate equipment breakdown reports (PMs & CMs).
- **Give field staff quick and easy access to work orders via mobile app.**
- User friendly and intuitive to use.
- Bar coding technology.
- **Warehouse and ordering features.**



NEXGEN integrating our GIS



Sonoma
Water

Project Milestones/Timeline

Kickoff/Planning
January 2023

Migrate Maximo
Data March 2023

Configure system
for Sections April
2023

Migrate CAD
drawings and O&M
manuals
April 2023

Interface with GIS
& Interfaces April
2023

Systems Test June
2023

User Acceptance
Test August 2023

User Training
October 2023

Go Live August
November 2023



Sonoma
Water

Reviews

North Marin Water
Great Lakes Water Authority
Sacramento County Water
Northern Ohio Regional Sewer District



Sonoma
Water

Fiscal Impacts of new CMMS Implementation

\$750,000 in FY 22/23 GF

\$500,000 in FY 23/24 from GF





**Sonoma
Water**

David Royall
Maintenance Manager



sonomawater.org