



Sonoma Water

Clean. Reliable. Essential. Every Day.

Dry Creek Community Meeting

Lake Sonoma Visitor Center

January 12, 2026

David Manning, Assistant General Manager

Greg Guensch, P.E., Engineer IV, Design and
Construction Project Manager

    [sonomawater.org](https://www.sonomawater.org)



Agenda

- 6:00 Welcome and Introductions (Supervisor Gore)
- 6:15 PM Dry Creek Project Background and Status (David Manning and Greg Guensch)
- 6:30 PM Physical Monitoring (Dr. Neil Lassettre)
- 6:40 PM Fish Monitoring (Dr. Gregg Horton)
- 6:50 PM Project Maintenance (David Cook and Eric McDermott)
- 7:00 PM Open Discussion Q&A
- 8:00 PM Adjourn



2008 Biological Opinion Dry Creek Objectives



Reduce water velocity for coho salmon summer and winter rearing by improving depth, cover, and habitat complexity



Enhance 6 of 14 miles of Dry Creek over 12 years using an adaptive management approach.



Dry Creek Habitat Enhancement Project Reaches And Timeline



**Sonoma
Water**



**US Army Corps
of Engineers**
San Francisco District



Enhancement Projects

- Completed projects
- USACE Sites in design for 2021-2024 construction

	MILESTONE 1	MILESTONE 2	DECISION POINT	MILESTONE 3
<ul style="list-style-type: none"> Complete design phase Permitting Landowner agreements Begin construction 	1 mile of habitat in Dry Creek completed and work begins on miles 2 & 3	Complete enhancement of miles 2 & 3	Evaluate the success of the enhancement projects	Enhance 3 additional miles of habitat in Dry Creek for a total of 6 miles
2012	2014	2017	2018	2024



2025 Russian River Biological Opinion



On April 29, 2025, National Marine Fisheries Service (NMFS) issued a second Biological Opinion to the U.S. Army Corps of Engineers (USACE) and Sonoma Water



10-year term and covers the USACE and Sonoma Water's operations and maintenance activities, including flood control, water supply, channel maintenance, monitoring, and habitat restoration in the Russian River watershed.



Non-Jeopardy Opinion

Proposed Action “is not likely to jeopardize the continued existence” of Central California Coast coho salmon, California Coastal Chinook salmon, Central California Coast steelhead, or adversely modify their designated critical habitat.

Significant change from the 2008 Russian River Biological Opinion, which was a jeopardy opinion. The **2025 Biological Opinion is a non-jeopardy opinion**, which reflects improvements in operations and conservation measures.

NMFS included Reasonable and Prudent Measures in the 2025 Biological Opinion to address potential adverse impacts to listed salmon species.



2025 Russian River Biological Opinion



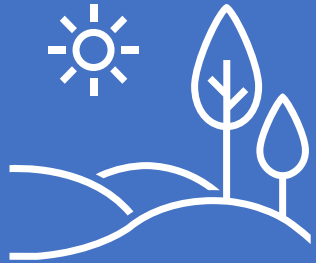
“this large-scale restoration effort has addressed the lack of low water velocity areas and provided a significant increase in cover and water depth and, therefore, increased habitat suitability for rearing juvenile salmonids, particularly coho salmon.”



“There is clear evidence that juvenile salmonids and steelhead are utilizing the completed 4.5 miles of habitat enhancements in Dry Creek. Nearly all life stages of all 3 species have been observed using the enhanced habitat reaches.”



2025 BO Dry Creek Requirement



USACE and Sonoma Water to **continue habitat enhancement efforts in Dry Creek including adaptive management**, completion of a small-scale project, an additional mile of restoration (or alternative project), and long-term maintenance of completed projects by Sonoma Water.



Phases I-III Sonoma Water



RFPs to select 3 industry-leading consultants (Inter-Fluve, ESA, Stantec)



Project requirements developed by team of agency experts



Geomorphic Assessment, Feasibility Study, Site selection



Conceptual Designs



Property owner meetings



Topographic and bathymetric surveys, engineering analyses, hydraulic and sediment modeling



Detailed design, Bidding and Construction



Phases IV-VI Army Corps of Engineers



Additional team of Corps staff



Detailed Alternatives Analysis to select sites and conceptual designs



Engineering and geomorphic analyses, hydraulic and sediment modeling



Detailed design



Review



Bidding and construction



Construction

- Competitively bid
- Contractors specializing in stream restoration and drainage
- Added access ramps and access and drainage improvements when necessary

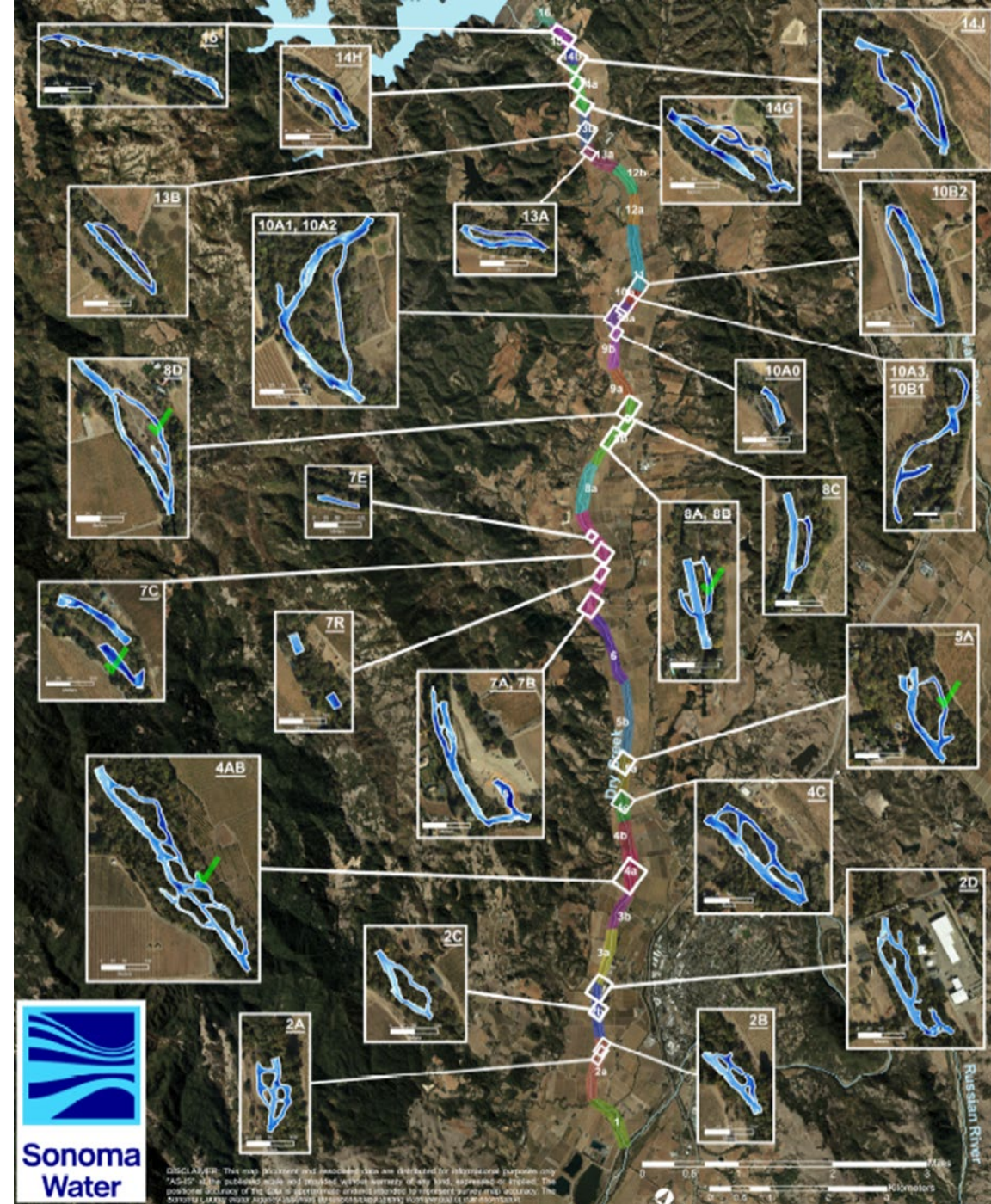


- Constructed between June 15 and October 15
- Observed/Inspected by Sonoma Water or Corps staff



Current Project Status

- Construction complete.
 - 24 Habitat reaches built between 2012 and 2024 (many with multiple sites)
 - 10 **Previously existing** bank failures repaired as part of Dry Creek Project
- Corps to repair 3 Reach 10 sites.
- Alternative to last phase (Phase 6) to be implemented per the 2025 Biological Opinion
- Now in Monitoring and Maintenance phase
 - 5 Site-scale maintenance activities thus far
 - Planning to maintain multiple small sites in 2026



Project Design and Implementation

- Phases I – III (Sonoma Water)
 - Project requirements (6 miles, habitat criteria, feature types) developed by team of agency experts
 - RFPs to select 3 industry-leading consultants (Inter-Fluve, ESA, Stantec)
 - Geomorphic Assessment, Feasibility Study, Site selection
 - Conceptual Designs
 - Property owner meetings
 - Topographic and bathymetric surveys, engineering and geomorphic analyses, hydraulic and sediment modeling
 - Detailed designs
 - Bidding and construction
- Phase IV – VI (Corps)
 - Additional team of Corps staff
 - Detailed Alternatives and Benefit/Cost Analysis to select sites and conceptual designs
 - Engineering and geomorphic analyses, hydraulic and sediment modeling
 - Detailed design
 - Review
 - Bidding and construction





Final

**Current Conditions
Inventory Report**

**Dry Creek:
Warm Springs Dam to
Russian River**

Sonoma County, CA

Prepared for:

Sonoma County Water Agency
404 Aviation Boulevard
Santa Rosa, CA 95403

Prepared by:

Inter-Fluve, Inc.
1020 Wasco Street, Suite I
Hood River, OR 97031

With:

**FISH HABITAT ENHANCEMENT
FEASIBILITY STUDY**

Draft Report • March 2011

**DRY CREEK
WARM SPRINGS DAM
TO THE RUSSIAN RIVER
SONOMA COUNTY, CA**



**DRY CREEK FISH HABITAT ENHANCEMENT:
CONCEPTUAL DESIGN REPORT**

Final Report • July 2012

**DRY CREEK:
WARM SPRINGS DAM
TO THE RUSSIAN RIVER
SONOMA COUNTY, CA**



DRAFT

**90% Complete
Design Report**

**Dry Creek Habitat
Enhancement
Demonstration
Projects:
River Miles 6.2 to 7.3**

Sonoma County, CA

Prepared for:

Sonoma County Water Agency
404 Aviation Boulevard
Santa Rosa, CA 95403

Prepared by:

Inter-Fluve, Inc.
1020 Wasco Street, Suite I
Hood River, OR 97031



Construction

- Competitively bid
- Contractors specializing in stream restoration and drainage
- Added access ramps and access and drainage improvements when necessary



- Constructed between June 15 and October 15
- Observed/Inspected by Sonoma Water or Corps staff

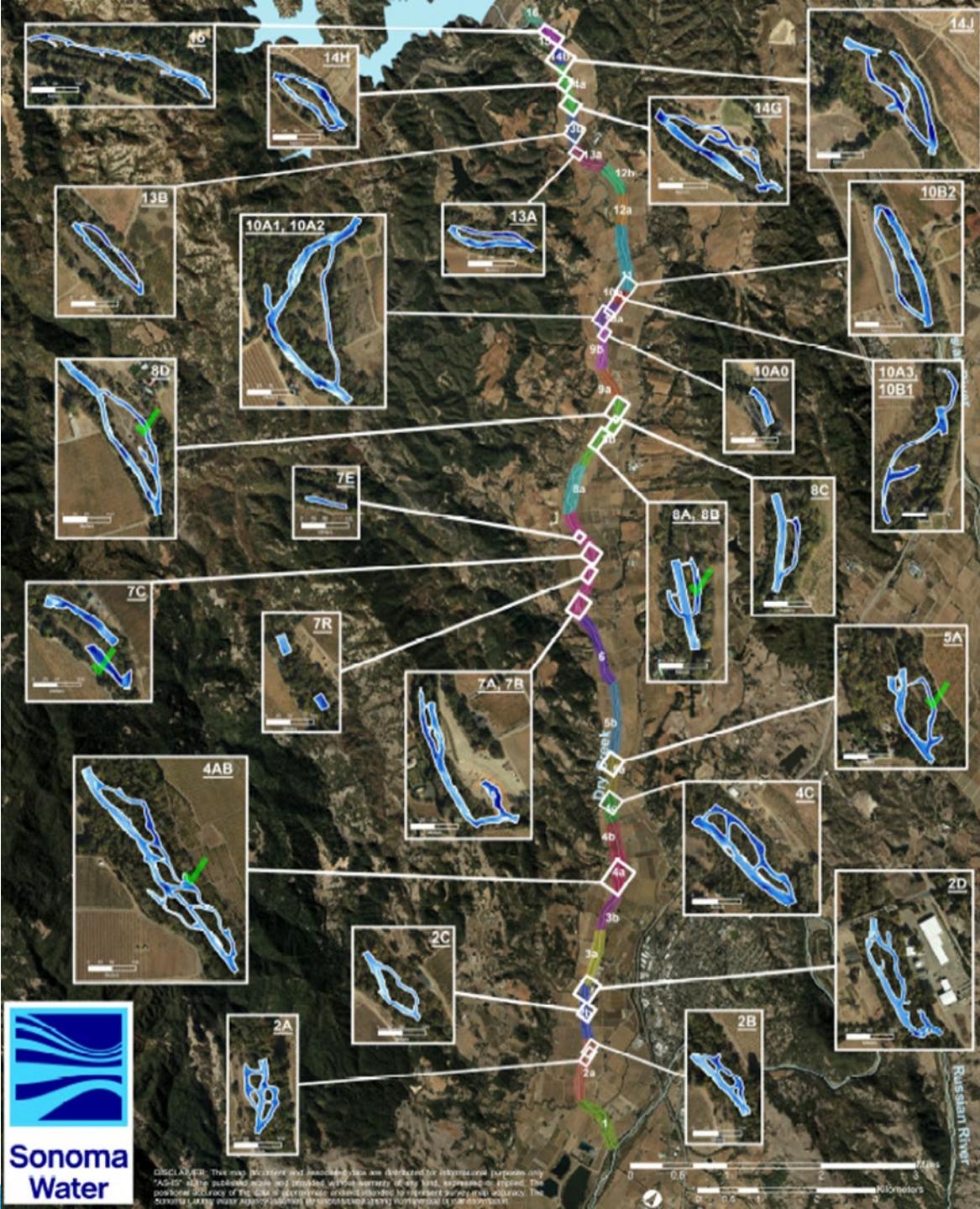
Construction Timing

- 2012 – 2014: Phase I (Reach 7)
- 2016 – 2018: Phase II (Reach 8 and 14)
- 2017 – 2018: Phase III (Reaches 2 and 4)
- 2020 – 2021: Phase III (Reach 5A)
- 2022 – 2024: Phase IV (Corps, Reaches 10 and 13)
- 2023 – 2024: Phase V (Corps, Reaches 2 and 4)



Current Project Status

- Construction complete.
 - 24 Habitat reaches built between 2012 and 2024 (many with multiple sites)
 - 10 **Previously existing** bank failures repaired as part of Dry Creek Project
- Corps to repair 3 Reach 10 sites.
- Alternative to last phase (Phase 6) to be implemented per the 2025 Biological Opinion
- Now in Monitoring and Maintenance phase
 - 5 Site-scale maintenance activities thus far
 - Planning to maintain multiple small sites in 2026







Juvenile Fish Feeding in Habitat Site

