

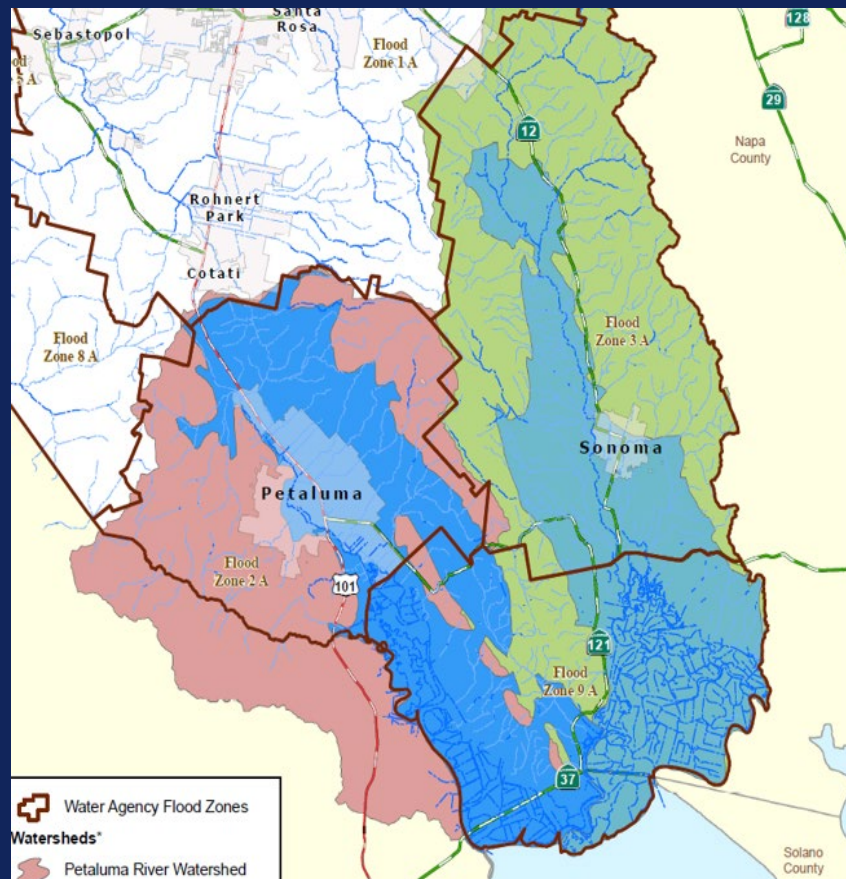


# Sonoma Water

Clean. Reliable. Essential. Every day.

## Storm Water Resource Plan

Flood Zone 2A - Petaluma  
Advisory Committee  
March 21, 2019



# Purpose & Background

- **Senate Bills 790 & 985** (Pavley, 2009, 2014) “**The Stormwater Resource Planning Act**”, Wholesale change – viewed as resource for water supply resiliency
- Requires public agencies to develop a **Storm Water Resource Plan** (collaboratively prioritizing projects) to receive implementation grant funds from any voter approved bonds (after Jan. 2014)
- Planning tool for community resiliency. Watershed based, emphasis on dry weather and storm water runoff (capture, treatment, reuse).
- Prop 1 Water Bond: \$200M to SWRCB
  - Planning and Implementation Round 1: \$80M
  - Implementation Round 2 (summer 2019): \$90M

# PLAN COLLABORATORS

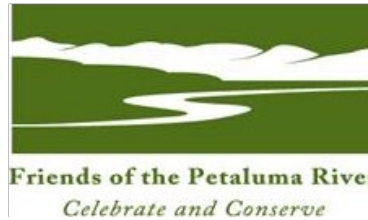
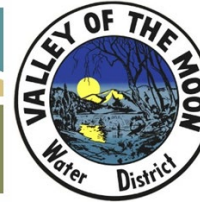


**AG +  
OPEN  
SPACE**  
SONOMA COUNTY

LAND FOR LIFE



*because every choice matters*



**Sonoma  
Water**









# Multiple Benefits

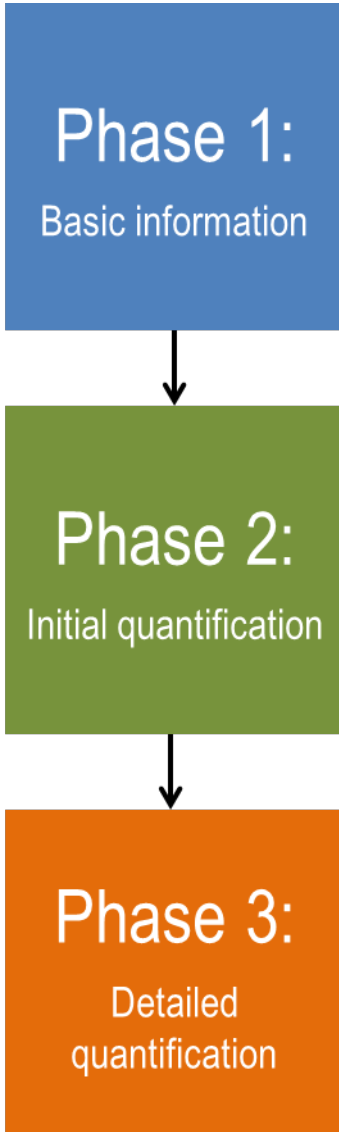
**TABLE 4. STORM WATER MANAGEMENT BENEFITS**

Benefit Category	Main Benefit	Additional Benefit
<p><b>Water Quality</b>  <i>while contributing to compliance with applicable permit and/or TMDL requirements</i></p>	<p>Increased filtration and/or treatment of runoff</p>	<p>Nonpoint source pollution control</p> <p>Reestablished natural water drainage and treatment</p>
<p><b>Water Supply</b>  <i>through groundwater management and/or runoff capture and use</i></p>	<p>Water supply reliability</p> <p>Conjunctive use</p>	<p>Water conservation</p>
<p><b>Flood Management</b></p>	<p>Decreased flood risk by reducing runoff rate and/or volume</p>	<p>Reduced sanitary sewer overflows</p>
<p><b>Environmental</b></p>	<p>Environmental and habitat protection and improvement, including;</p> <ul style="list-style-type: none"> <li>- wetland enhancement/creation;</li> <li>- riparian enhancement; and/or</li> <li>- instream flow improvement</li> </ul> <p>Increased urban green space</p> <p>Employment opportunities provided</p>	<p>Reduced energy use, greenhouse gas emissions, or provides a carbon sink</p> <p>Reestablishment of the natural hydrograph</p> <p>Water temperature improvements</p> <p>Community involvement</p>
<p><b>Community</b></p>	<p>Public education</p>	<p>Enhance and/or create recreational and public use areas</p>



# Southern Sonoma County SWRP

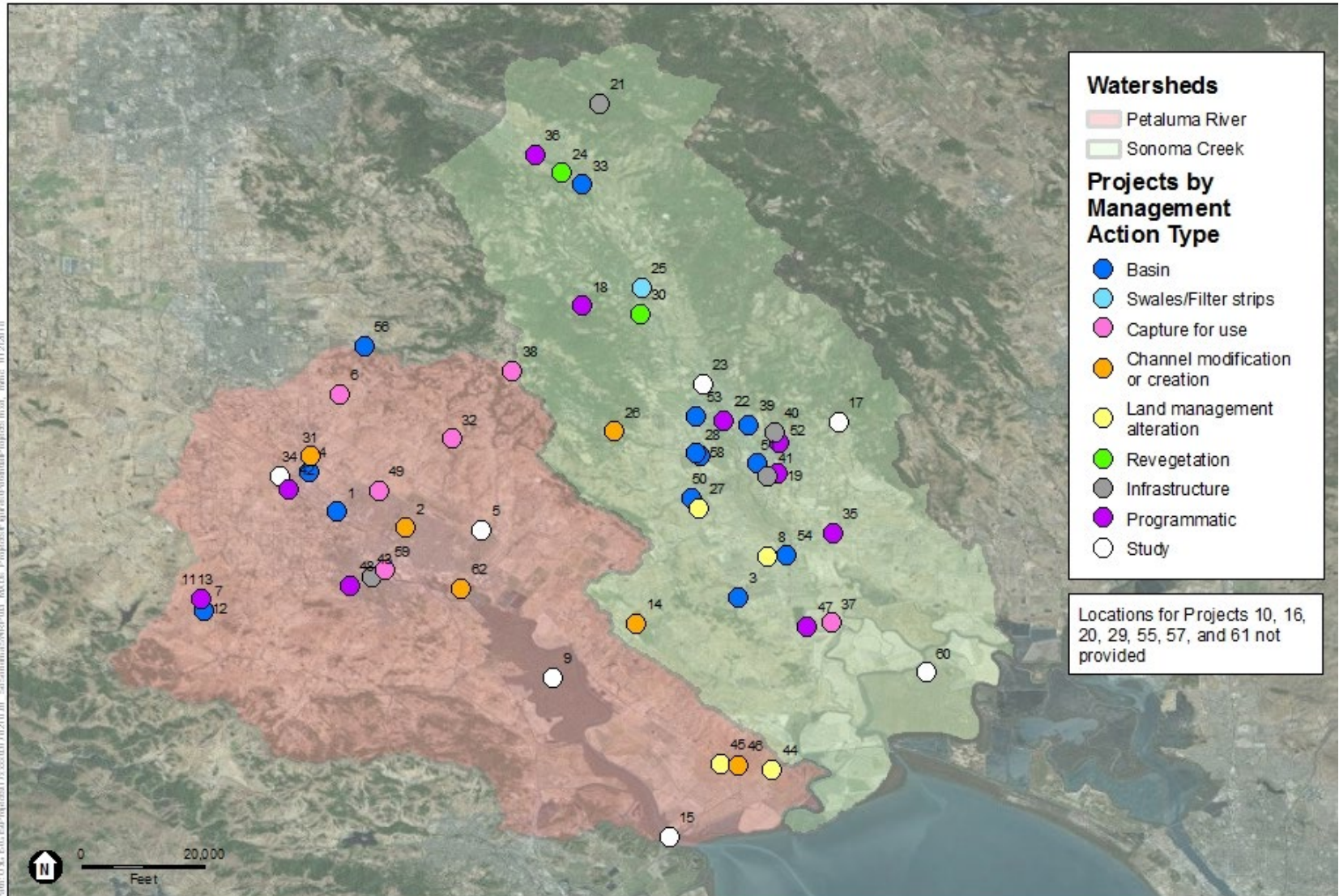
- 13 member TAC: NGOs, Cities, County entities, public
- 60 Projects Submitted
  - Petaluma – 25 projects
  - Sonoma – 27 projects
  - Both/Either – 8 projects



# Plan Features- Why Its Special

- Watershed based- public benefit
- Collaborative effort: shared data, publicly available
- Based on best available science and current regulations
- Agreed upon methods and metrics
- Democratizes opportunities, daylights projects
- Encourages partnerships and leveraging
- Cadillac process for evaluation and quantification
- Rec'd approach for site assessment for recharge potential
- Quantification guidelines developed for volume reduction and flood management
- Living plan and program: adaptable, built to serve community needs and address multiple community needs.
- Provides ready road map for the future.

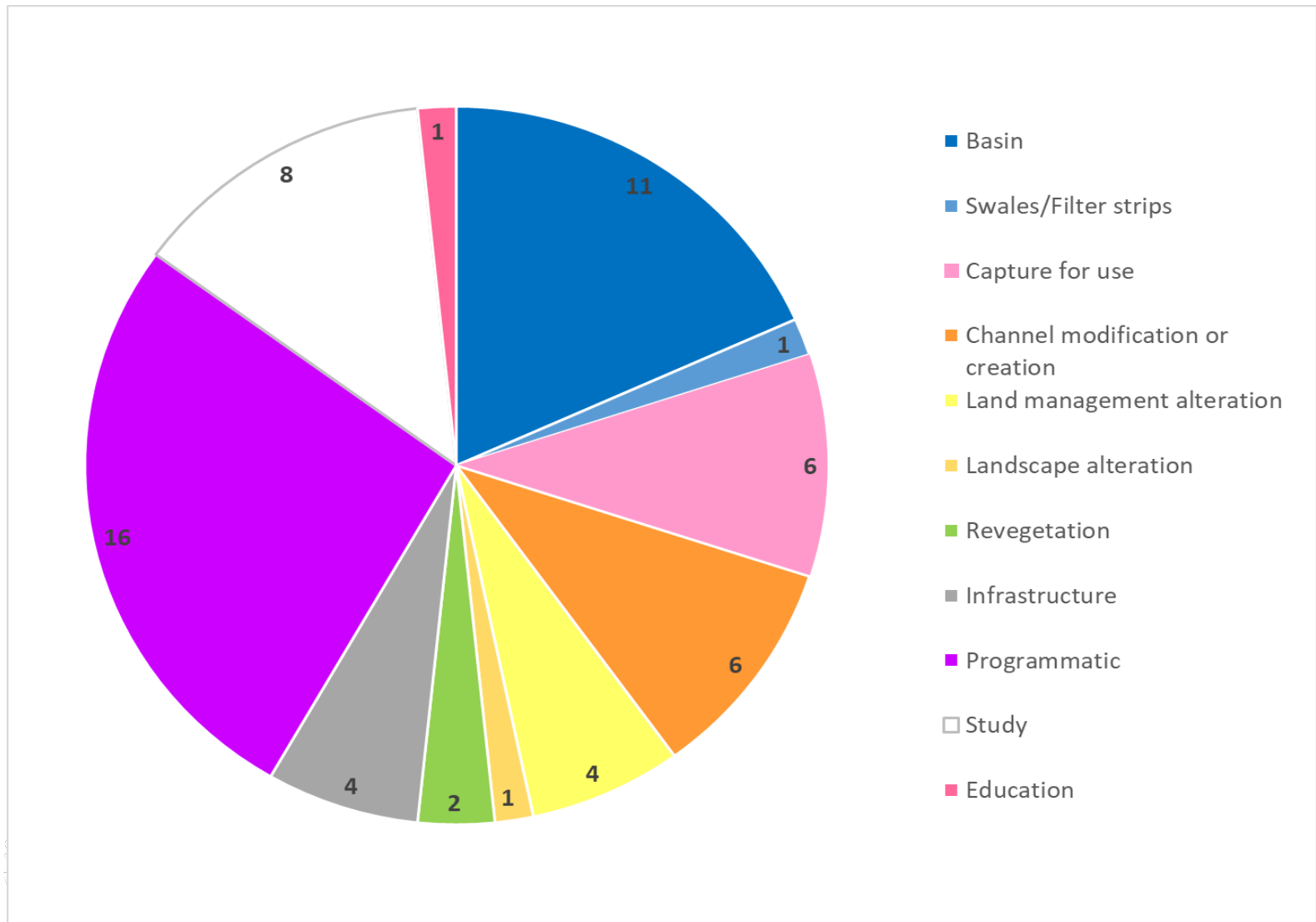
# Project Locations



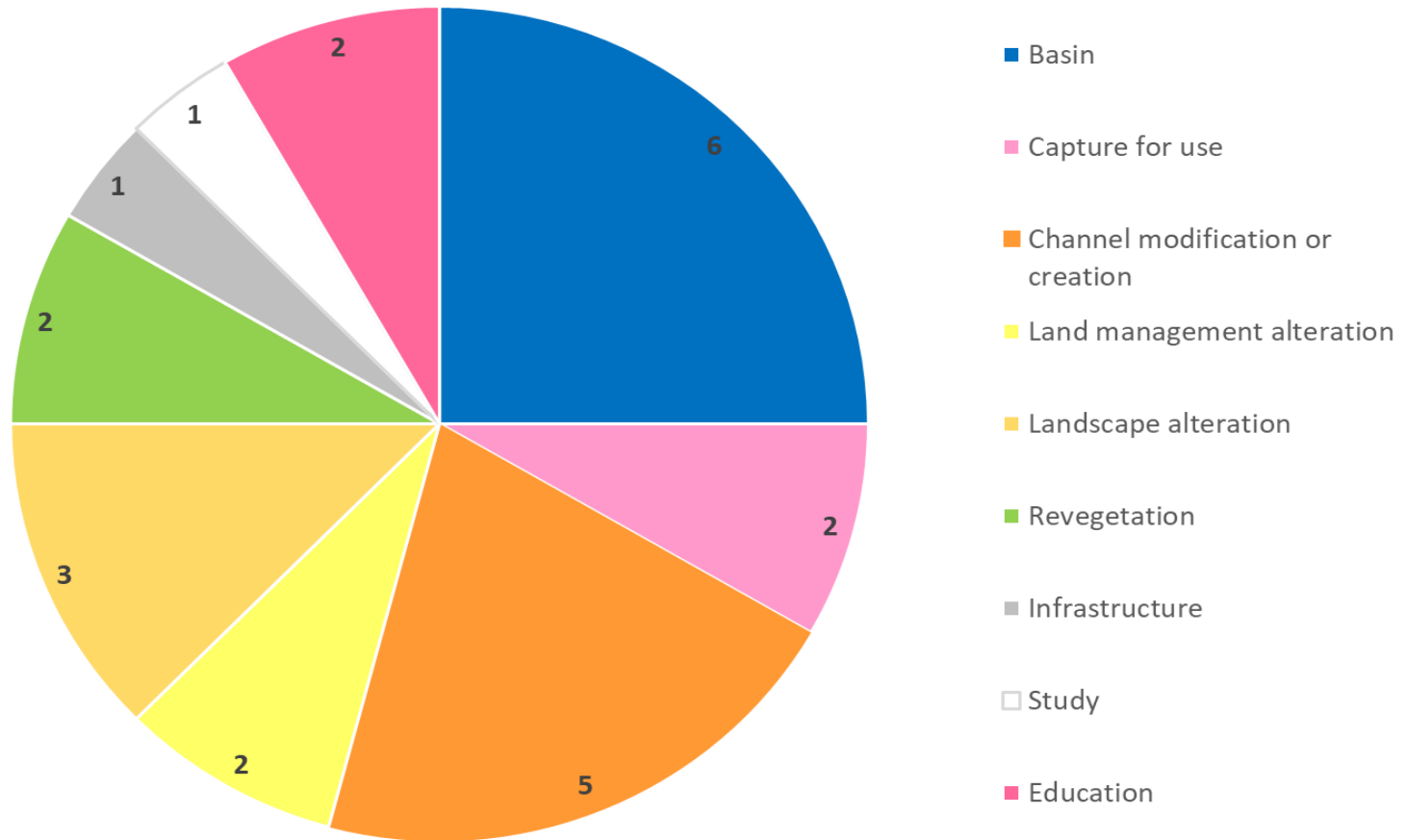
DATE: 11/13/2013 10:52:00 AM PROJECT: 1113201311



# Projects by Management Action



# Programmatic and Study Detail



# Petaluma Projects

**Proponents:** Friends, Daily Acts/SRJC, City, Sonoma Water, RCD, SLT, and Equine Environmental Mgmt.

## Project Examples:

- Stormwater Detention
- Riparian Restoration
- Trash Capture Pilot Project
- Suite of Equine Facility Water Stewardship Practices for on-ranch water capture & manure mgmt.
- Adopt-A-Creek Program (education and hands-on work)
- Rain Gardens, Rainwater Capture and Landscape Transformations
- Recharge: 4 in Petaluma Valley Basin (3 outside basin)





# Future Implementation

- Plan Manager- Sonoma Water
- Projects can be added or modified
- Feasibility studies remain important for viability
- Eligible entities (agencies, non profits, special districts) can apply for Round 2 funding- summer 2019
- Plan designed to leverage other funding sources
- Data, evaluation tools and prioritization process useful and translatable for other resiliency initiatives, help guide future actions



**Sonoma  
Water**

Susan Haydon  
Project Specialist

[Susan.Haydon@scwa.ca.gov](mailto:Susan.Haydon@scwa.ca.gov)

[Sonomawater.org/swrp](https://sonomawater.org/swrp)

    [sonomawater.org](https://sonomawater.org)

# Subsurface Test Sites – Petaluma River Watershed



Project #6, Penngrove Ranch  
Geophysical testing only



Project #56, Coyote Family Farm  
Geophysical & borings