



# Sonoma Water

Clean. Reliable. Essential. Every Day.

## 2020 Stream Maintenance Overview

ZONE 3A FLOOD ZONE MEETING



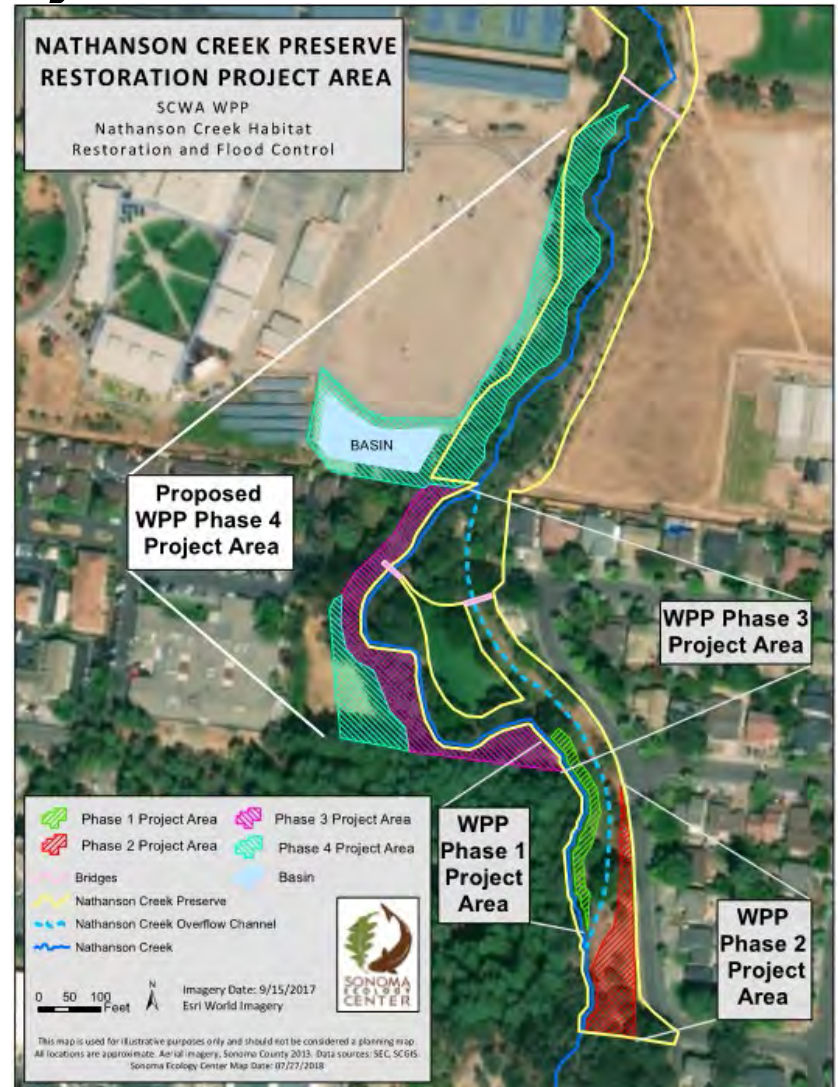
# Vegetation Maintenance Overview

- Fryer Creek
  - Hazardous Tree Removal
- Nathanson Creek
- Rodgers Creek
  - Blockage Removal



# SMP Mitigation Projects 2015-2019

- Watershed Partnership Program
  - 5 Projects
  - 2.61 Acres
  - \$309,947



# Fryer Creek Beaver Study

- Pair of Beavers constructed 3 dams on Fryer and East Fork Fryer Creek
- Sonoma Water installed pond levelers on all three dams
- Levers maintain water levels in the in the beaver pond and elevation below the service road in order to maintain access for maintenance and emergency vehicles
- A Hydrological and beaver guidance study being prepared by Prunuske Chatham, Inc and collaborating with Occidental Arts & Ecology Center and Swift Water Design





Extent of Upper Dam



Lower (Downstream) dam as of 3/5/20. upper and lower dam are approx. 160 ft apart. Walking bridge located ~100 ft downstream of lower dam



Two Beavers moving over the Upper Dam. From the camera images, there are at least two beavers occupying the dams and den.



02/28/2018 09:39 PM 46°F

SPYPOINT LINK-DARK



Sentinel  
Water

# Beaver working on Upper Dam



02/28/2018 06:39 AM 39°F

SPYPOINT LINK-DARK





# Crossing over Upper Dam



Sonoma  
Water

# Process of Building the Upper Dam



Sonoma  
Water

**QUESTIONS?**





**Sonoma  
Water**