



# Sonoma Water

**Clean. Reliable. Essential. Every Day.**

## Zone 2A Presentation: Washington Creek Emergency Project

August 29, 2024

Alex Bodulow, P.E., Engineer III



[sonomawater.org](https://sonomawater.org)





# AGENDA

- Background
- Completed Work
- On-going Work
- Schedule
- Q/A



# BACKGROUND

## Who, What, When, Where, Why

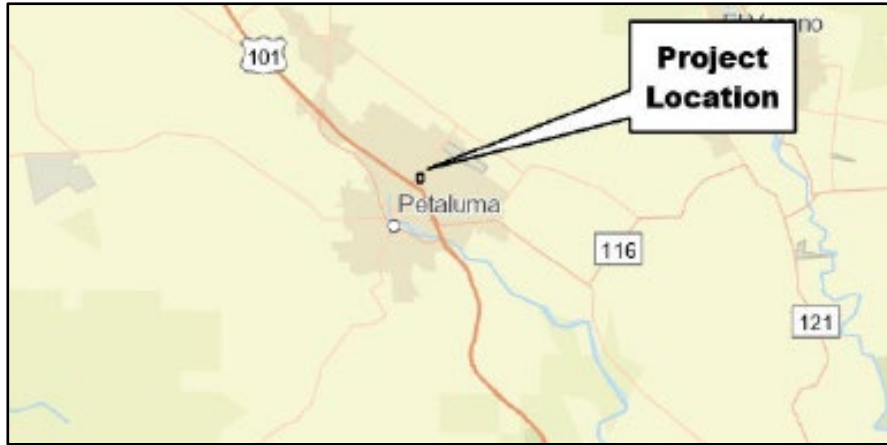
- Sonoma Water
- Kleinfelder
- Ghilotti Construction
- *City of Petaluma\**





# BACKGROUND

## Who, What, When, Where, Why





# BACKGROUND

## Who, What, When, Where, Why

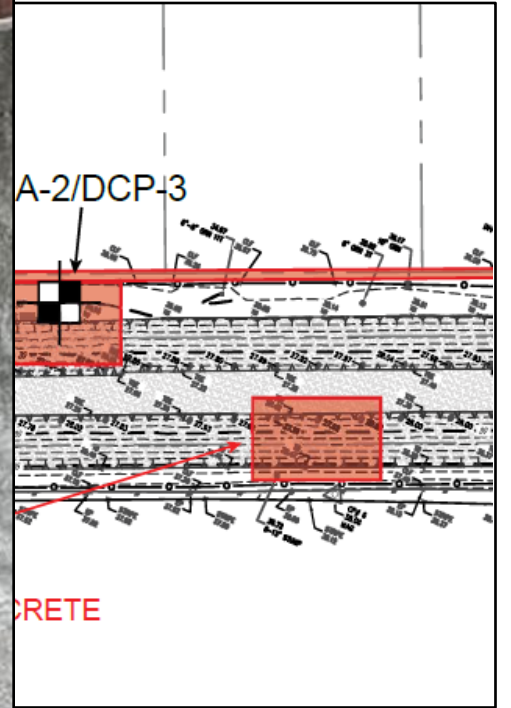
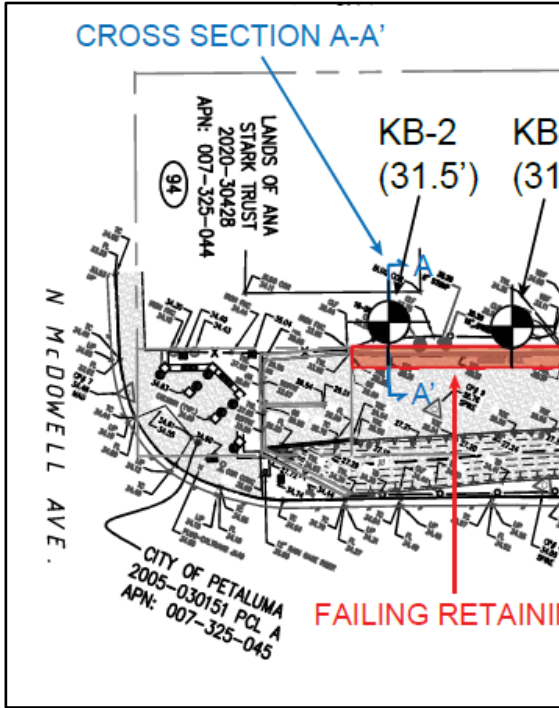
- Retaining Wall
  - 1960's
- Panels
  - 1969
- Engineering Evaluation
  - 8/2023





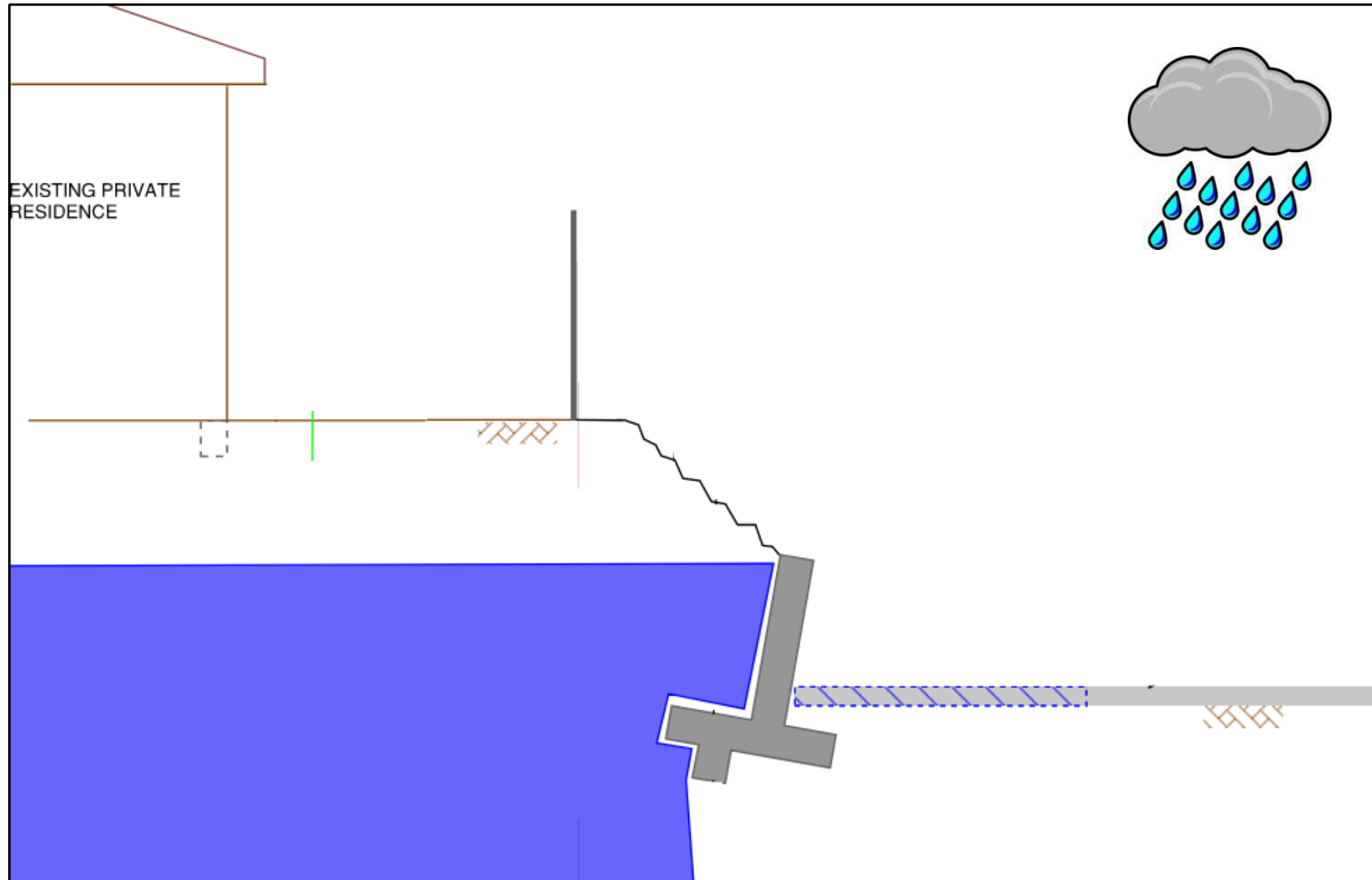
# BACKGROUND

## Who, What, When, Where, Why



# BACKGROUND

Who, What, When, Where, Why





# BACKGROUND

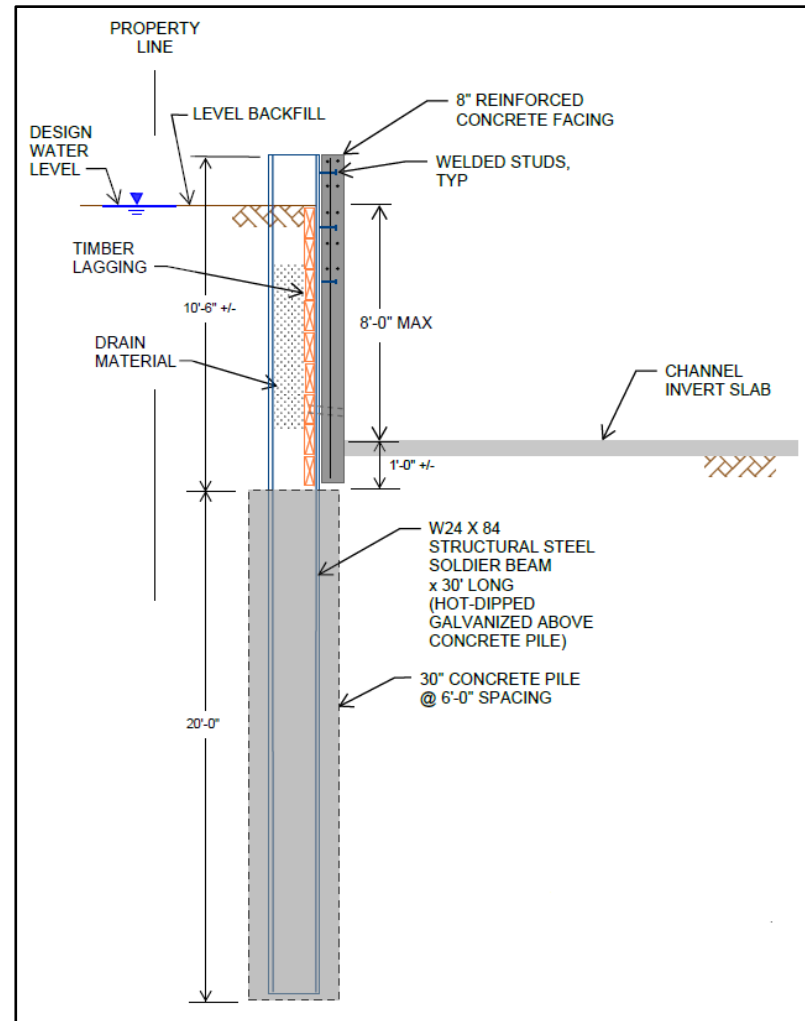
Who, What, When, Where, Why





# COMPLETED WORK

- Initial Engineering Evaluation
  - 8/2023
- Geotechnical Evaluation
  - 6/2024
- Declaration of Emergency
  - 7/11/2024
- Conceptual Design
  - 7/31/2024
- Pre-Con Monitoring
  - 8/26/2024



Approximate Elevation (feet)	Depth (feet)	Graphical Log	Lithologic Description	Sample Type	Blow Count (BC) = Uncorr. Blows/ft. Pocket Pen (PP) = bf	Recovery (NR=No Recovery)
Latitude: 38.24861° Longitude: -122.62584° Approximate Ground Surface Elevation (ft.): 35.00 Surface Condition: Grass						
			Fat CLAY (CH): high plasticity, blackish brown, moist, very stiff, trace coarse sand, rootlets			
	3.0'		stiff to very stiff		BC=4 8 11 PP=1.5	72%
	5'		Fat CLAY (CH): medium to high plasticity, light gray, moist, very stiff, fine to medium sand, rootlets		BC=9 17 24 PP=3.5	55%
	8.0'		stiff		BC=6 7 8 PP=2.0	77%
	10'		Sandy Fat CLAY (CH): high plasticity, grayish blue, moist, stiff, fine to medium sand		BC=5 7 9 PP=1.0	89%
	15'		Fat CLAY (CH): high plasticity, grayish blue, moist to wet, stiff			
	20'		Poorly Graded SAND (SP): gray, wet, dense, fine to coarse sand		BC=5 15 29	NR
	25'		Clayey SAND (SC): medium plasticity, grayish brown, moist, medium dense, fine to coarse sand, occasional subrounded gravel to 0.5"		BC=6 9 16	100%
	30'		Poorly Graded SAND (SP): dark brownish gray, moist, dense, fine to coarse sand, trace subrounded gravel to 0.5"		BC=11 16 20	61%
	35'		Sandy Lean CLAY (CL): low plasticity, brownish gray, moist, hard, fine to coarse sand		BC=8 19 21	89%
	40'		30.0': light gray with white, carbonate stringers, rapid HCl reaction		BC=17 20 22 PP=4.0	50%
The boring was terminated at approximately 31.5 ft. below ground surface. The boring was backfilled with cement/bentonite grout on May 09, 2024.						



# ON-GOING WORK & SCHEDULE

- Collaboration with Property Owner
  - License Agreement / Permanent Easement
- De-watering Activities 9/3/24
- Begin Construction for Retaining Wall & Channel Liners ~ 9/9/2024
- Continue Monitoring During & After Construction
- Out of Creek Before 10/15/2024





# Questions?



**Sonoma  
Water**

**[Alex.Bodulow@scwa.ca.gov](mailto:Alex.Bodulow@scwa.ca.gov)**

    [sonomawater.org](http://sonomawater.org)